

G M A R C H I T E C T S

THE ARCHITECTURE
OF GOOD LIVING

OUR STORY



Franco-Lebanese architect of Egyptian and English origins, Galal Mahmoud spent many years in Paris after fleeing the Lebanese Civil War with his family in 1976. Driven by his deep belief in the power of design and architecture and their effect on the wellbeing of individuals, Galal Mahmoud graduated in 1986 from l'Ecole d'Architecture in Versailles. In 1987, he went on to make his first steps in the world of professional architecture, in the capital that blends character with style and Classical Art with Contemporary influence, Paris. Broadening his horizons, he teamed up with highly skilled Lebanese architects to establish GM Architects Beirut in 1997 and GM Architects Abu Dhabi in 2006.

Today, GM Architects has successfully left a mark on a wide array of countries, including Lebanon, Jordan, Egypt, Saudi Arabia, the United Arab Emirates, Bahrain, Kuwait, Sultanate of Oman, France, Greece, Turkey, Senegal and Morocco. The firm, increasingly solicited for large-scale developments, ensures effective global design management and constantly develops its international proficiency.

Due to his diverse background, Galal Mahmoud naturally adopts a multicultural approach in all of his undertakings. His ability to seize the spirit of a place and to capture the diversity of its influences, allows him to cast a global and authentically contextual vision on each project. During his many travels to Asia, Galal Mahmoud experienced wellbeing and the indoor-outdoor lifestyle typical of Asian culture. He now expertly and harmoniously marries this concept with the architecture of "Good Living," characteristic of the Mediterranean basin.

From these experiences, Galal Mahmoud draws his philosophy and his view on architecture, where the notions of wellbeing, "Good Living" and multiculturalism are paramount.

“ I deeply believe in the power of architecture on the quality of our lifestyles. I experience and visualize the spaces in continuous search of harmony and wellbeing, and in contact with the environment and nature. ” Galal Mahmoud

OUR JOURNEY

The constructed environment created by architects and designers has an important influence on society. From the smallest remodeling job to the largest structure, a design firm has the responsibility to create works that will have a positive effect on individuals. Stemming from this belief, GM Architects have designed commercial office exteriors and interiors, luxury retail projects of all shapes and sizes, high-end restaurants and major hotels and resorts for the likes of Sofitel, Jumeirah, Le Meridian, Sheraton, Crown Plaza, Rotana, Shaza, Mysk, Mykonian collection and Fraser. By seamlessly layering and integrating architecture, interior design elements, custom signature furniture, environmental graphics and art, GM Architects has created holistic and contextual experiences for each of the projects developed, giving them each a personalized signature. The project "Museum of Civilizations" devised by GM Architects, presented at the Venice Biennale 2014, was nominated to the World Architecture Festival of Singapore in the category "Future Project of the Year." It later went on to win the Architectural Review Future Projects prize of the 26th MIPIM in the "Cultural Regeneration" category, in March 2015.

Regardless of the nature of the location, GM Architects have always found an invigorating challenge to their senses in every design they implement. Their work primarily entails bringing new life to dull spaces, adding warmth and character to stale impersonal shapes, and remolding barren landscape into a vibrant, integral part of a community. This process culminates with building a memorable, pleasurable and visually exciting experience.

The firm's success is a result of diligent research, fine design, and lasting relationships. Their strength lies in their wide range of expertise analyzing and understanding not only the varied aspects of design and development, but also the client's personality and lifestyle habits. This allows them to create personalized contextual designs highlighting the latter's culture and history, and infusing each project with its own imaginative identity.

GM Architects' approach is holistic and interdisciplinary, relying on the wealth of knowledge and wisdom inherent in progressive multicultural, technologically appropriate and socially pertinent paradigms.

At GM Architects, a clear design concept, gracefully embracing both the historical identity and the contemporary character of the desired landscape, is established to serve as a backbone for each project. Each time, it is a journey through history, infusing life into the past while blending it with the present to create the only objects in the material universe to possess internal and external order...

OUR TEAM

The firm's team is comprised of three active senior partners. Each specialized in their own field, Randa Chahine, Anwar el Hajj and Elie Waked as well as 35 qualified, creative architects and interior designers. This has provided GM Architects with a highly efficient and professional work force enabling the delivery of each project within strict time schedules, all while preserving design integrity and comprehensive documentation for each project.

Each member on GM Architects' team represents an indispensable pillar to the success of its projects. Thus, we take pride in their devotion and determination, which has provided the drive to undertake the most complex challenges and has generated GM Architect's thriving and unrivaled standing and reputation.

Translating an abstract notion into a concrete reality is an extensive and intricate process. Hence, organization, coordination, collaboration, and above all, good communication among all parties involved is key to success. In view of that, GM Architects encompasses 4 major departments,

whose responsibility is to ensure the proper implementation of the original concept. From drawing the very first sketches and concept schemes to developing them into comprehensive work plans, from putting forward recommendations to providing on-site follow-up and final touches, the team delivers high levels of professionalism, credibility and reliability.

1- The Creative Department is where the team will investigate the physical characteristics of the proposed property, explore and capitalize on the different design directions and ultimately define a general concept scheme to serve as the project's backbone throughout the various design and execution stages.

2- The Production Department represents the conversion nucleus where senior architects extensively pore over the concept to generate a relevant work plan in harmony with recommendations presented by all involved parties. They are also responsible for the follow-up and coordination with the client and representatives.

3- The Furniture, Fixture and Equipment Department is responsible for refining the end-result with the subtlest of details. They assist the clients in branding the original concept with their sense of taste and personality. Their work covers all movable material, including furniture, custom designs, decorative accessories, corporate identity and branded elements.

4- The Site Follow-up Department represents the essence of communication and assistance in each project. They provide consultancy when deemed necessary or requested and ensure implementation of the project as planned, without compromising any detail. They also offer financial recommendations upon request. Their main concern is to set the original concept in motion towards the first steps of its completion.

OUR SENIOR PARTNERS



RANDA CHAHINE

A free spirit, Randa Chahine left formal education to dedicate her life to her passion, interior design and decoration, at the tender age of 17. Her zeal and constant pursuit of excellence lead her to work with some of Lebanon's best architects until eventually, her path crossed with that of Gala I Mahmoud's. Together, they have established Galal Mahmoud Architects as one of the foremost architectural practices in the country.



ANWAR EL HAJJ

Graduating in 1997 from the Lebanese University with a BSC Honors in Architecture, Anwar El Hajj has been passionate about architecture since he was a young child. He developed a comprehensive working knowledge of all aspects of the industry early on, at summer workshops and internships.

After beginning his professional life in the Ivory Coast, he returned to Lebanon and joined GM Architects in 2004. His dedication and vision, as well as the extensive experience he brought with him from Africa earned him full partnership that same year.



ELIE WAKED

While still a student, his teachers saw intuition in his approach to architecture, and thus Elie Waked graduated with honors in 2000 from the Lebanese Academy of Fine Arts, ALBA University, with a Master's degree in Architecture. After working with GM Architects for 3 years, he decided to expand his work experience by traveling to the UAE in 2005.

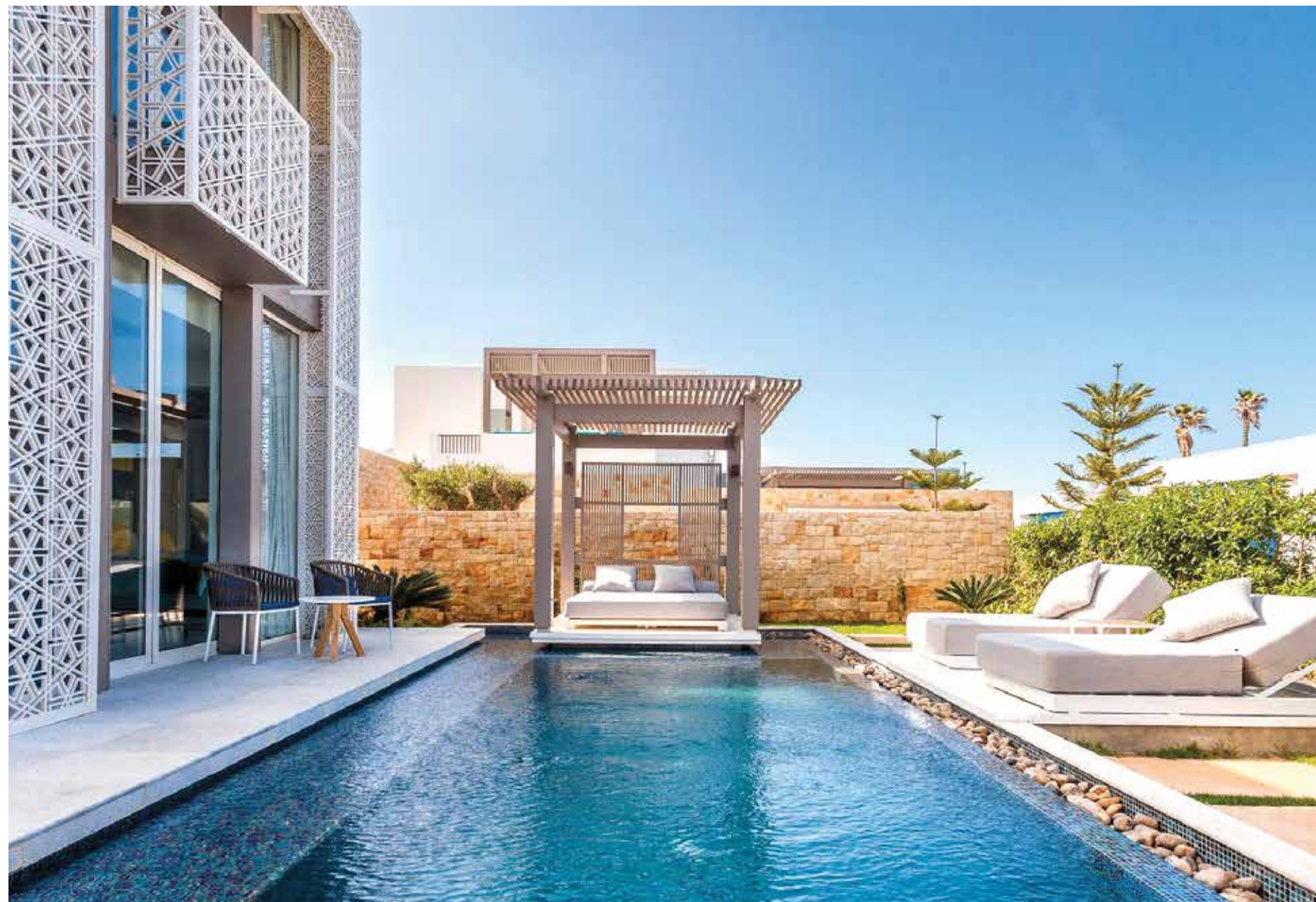
In 2006, Galal Mahmoud considered a strategic move for GM Architects aiming towards an expansion of its offices outside Lebanon, through the UAE. He assigned Elie with this task, who with dedication, vision and expertise in managing the UAE branch earned full partnership in 2008.

“ I experience and visualize the spaces in continuous search of harmony and wellbeing, and in contact with the environment and nature. I work on these spaces from the interior to the exterior and vice versa, allowing the landscape to enter an open area, well ventilated and intensely contemplative. ”

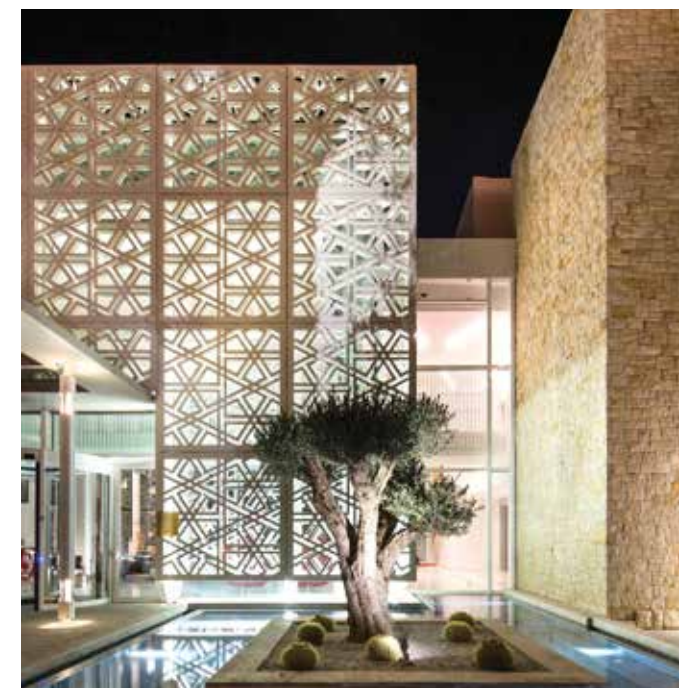
Galal Mahmoud

A SELECTION OF OUR PROJECTS





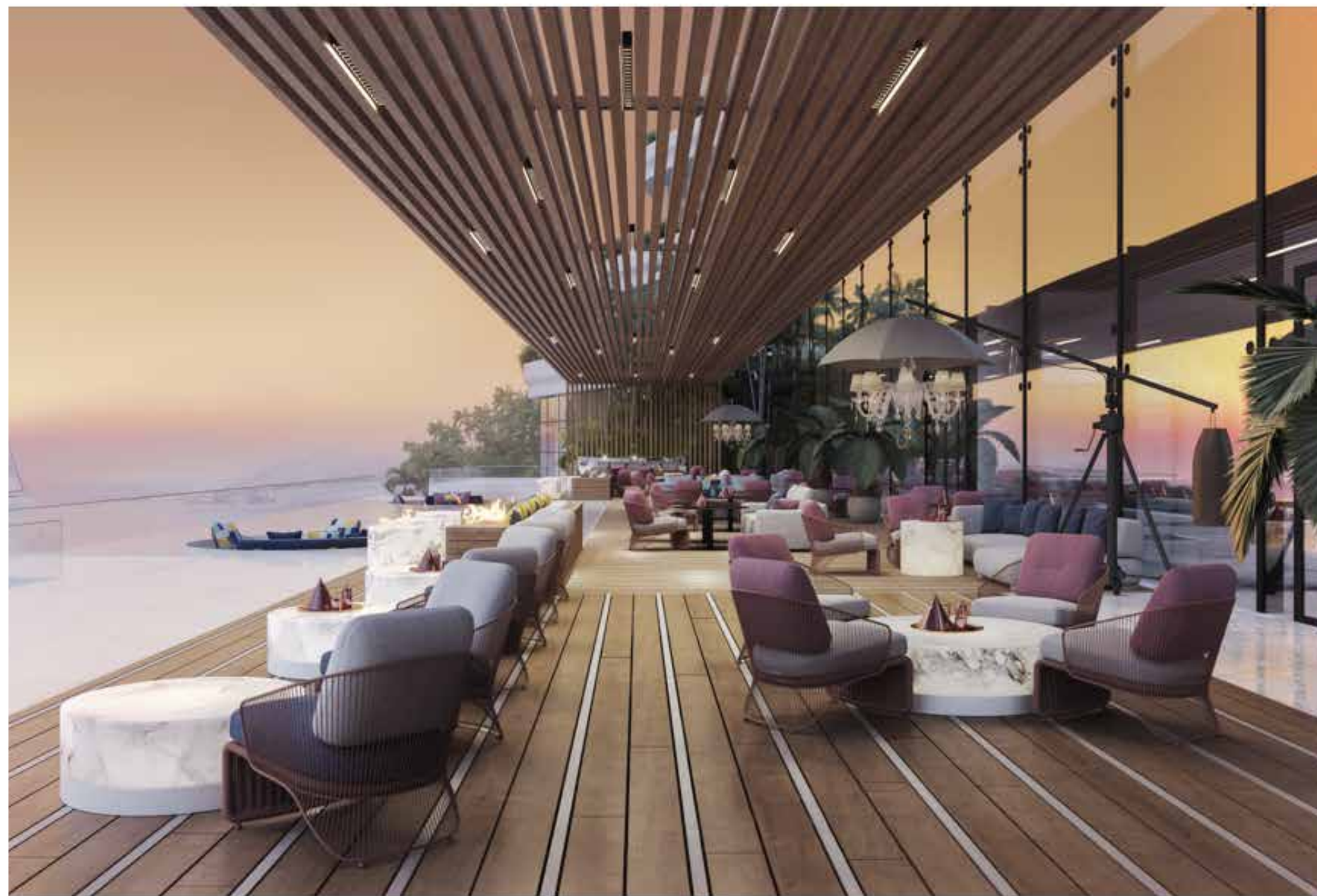
SOFITEL TAMUDA BAY HOTEL & RESORT - MOROCCO





JUMEIRAH HOTEL & RESORT - AL SAHEL - BAHRAIN





RODA BEACH RESORT - JUMEIRAH - DUBAI





SOFITEL WINTER PALACE HOTEL - LUXOR - EGYPT





MYCONIAN KYMA - DESIGN HOTELS - MYKONOS - GREECE



SHERATON RESORT - LES ALMADIES - DAKAR - SENEGAL



LE MERIDIEN - RIYADH - SAUDI ARABIA



MYCONIAN NAIA - LVX - MYKONOS - GREECE



MYCONIAN KORALI - RELAIS & CHÂTEAUX - MYKONOS - GREECE





RESIDENCE DE LUXE - MYKONOS - GREECE

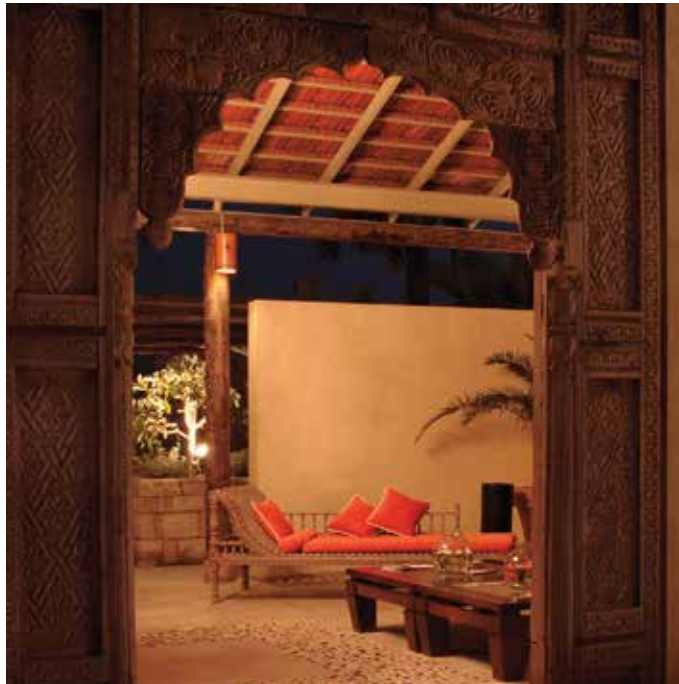


ROTANA SALALAH HOTEL & RESORT - SULTANATE OF OMAN



LE GRAY, SMALL LEADING HOTELS - BEIRUT - LEBANON





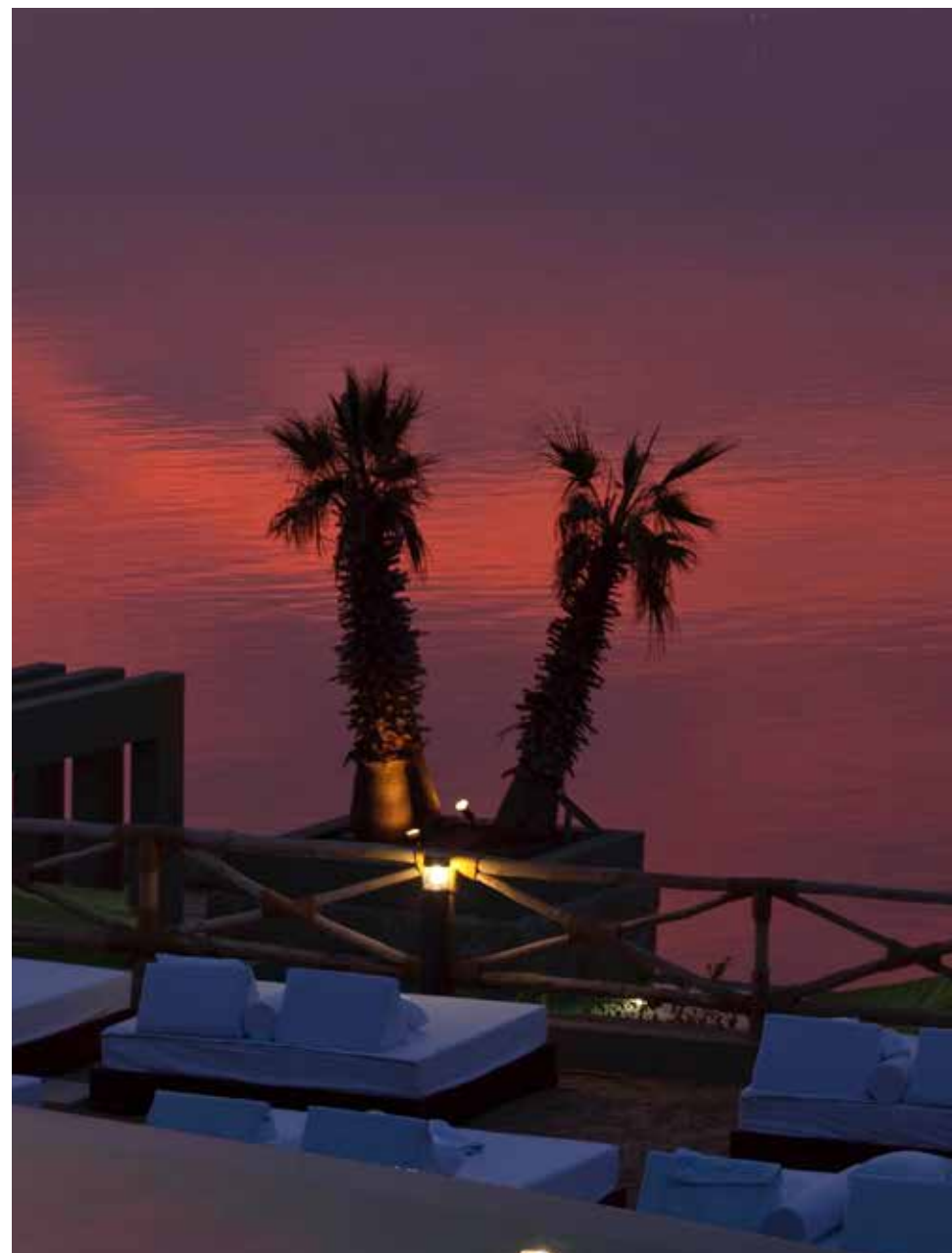


LE BRISTOL HOTEL - BEIRUT - LEBANON



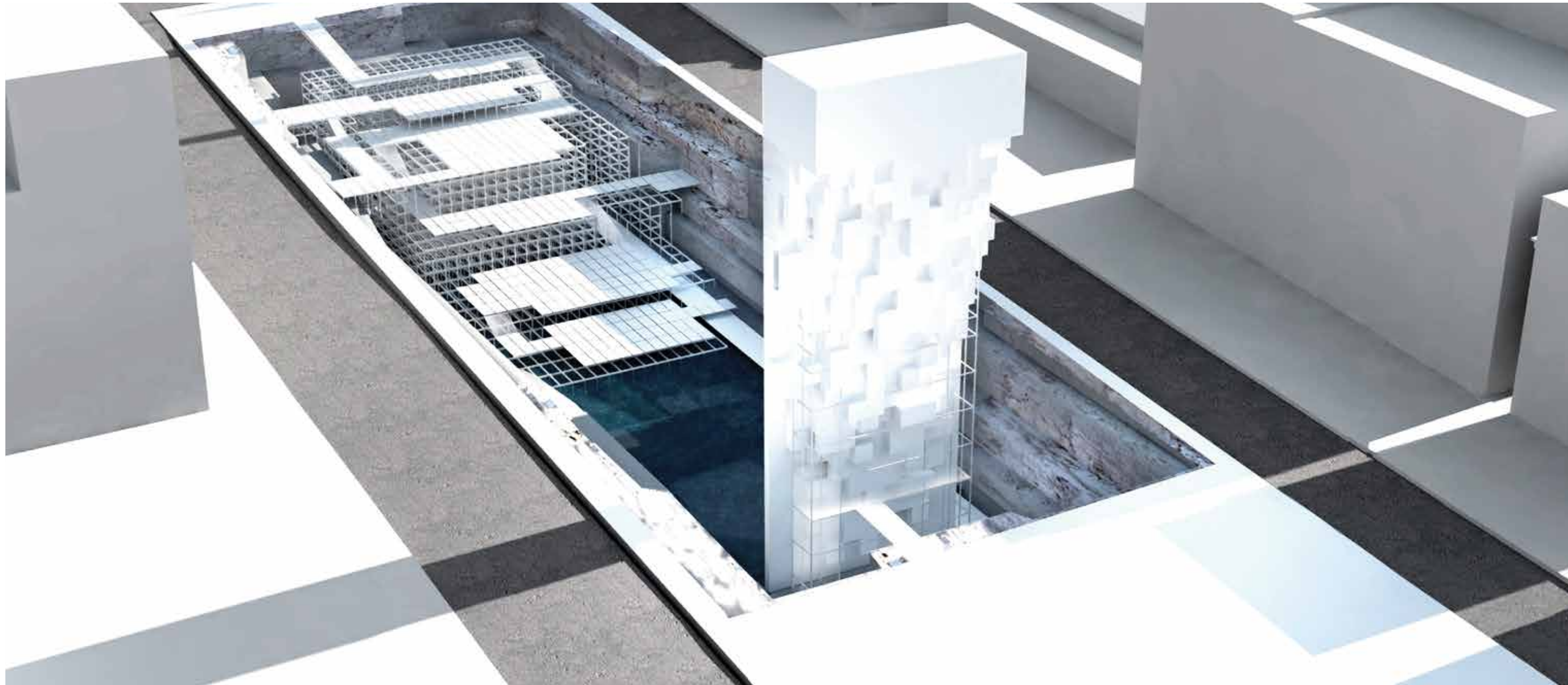
THE KEY HOTEL - BEIRUT - LEBANON





O'BEACH RESORT - DEAD SEA - JORDAN





MUSEUM OF CIVILIZATIONS - BEIRUT - LEBANON

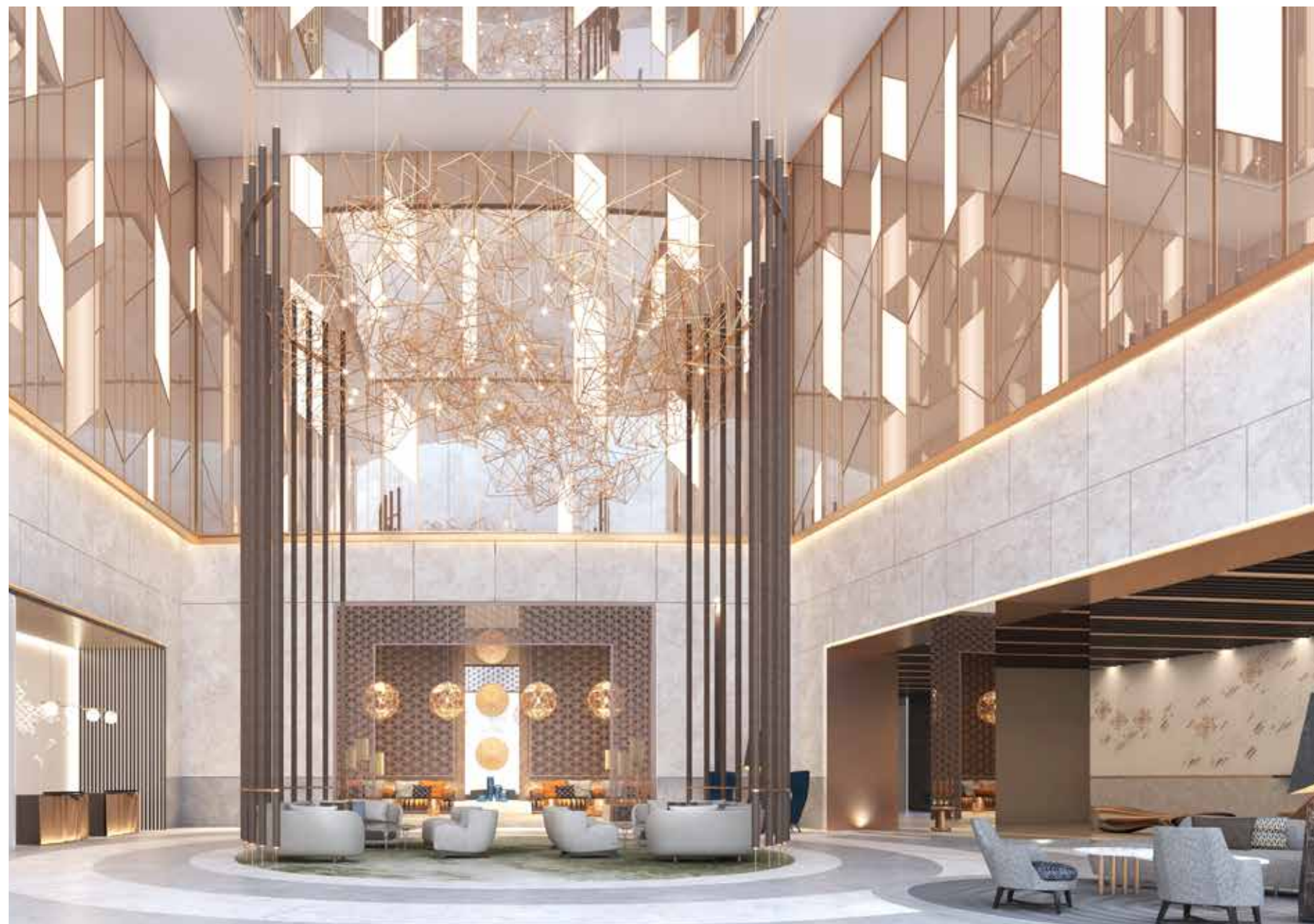


ROTANA KHALIFAH PARK HOTEL - ABU DHABI - UAE



MYCONIAN AMBASSADOR RELAIS & CHATEAUX HOTEL - MYKONOS - GREECE





MAJLIS GRAND MERCURE - DUBAI



KHOULAKIA RESIDENCE - MYKONOS - GREECE



TORTUGA RESIDENCES & VILLAS - BATROUN - LEBANON





CABO NEGRO RESIDENCE - MOROCCO





KNOTICA ISLAND - DUBAI - UAE



PORT D'AMOUR - DAMOUR - LEBANON



ADMA RESIDENCE - ADMA - LEBANON





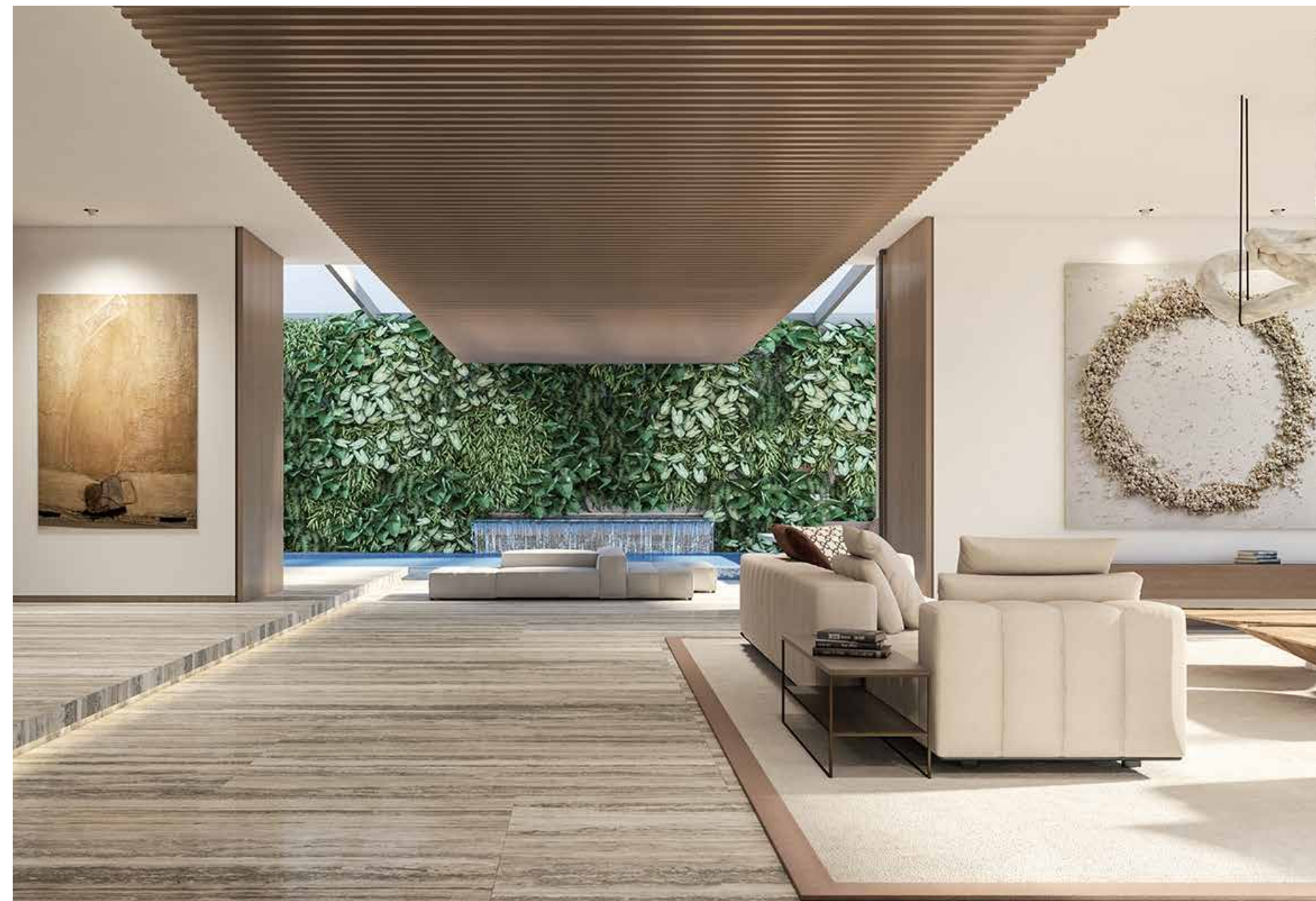
SARAEIN HOTEL & SPA



MAJLIS GRAND MERCURE - RIYADH - KSA



EDAFAH SUITE HOTEL - RIYADH - KSA



SKY GATE RESIDENCE - BEIRUT - LEBANON



ROYAL MANSOUR - AGADIR - MOROCCO





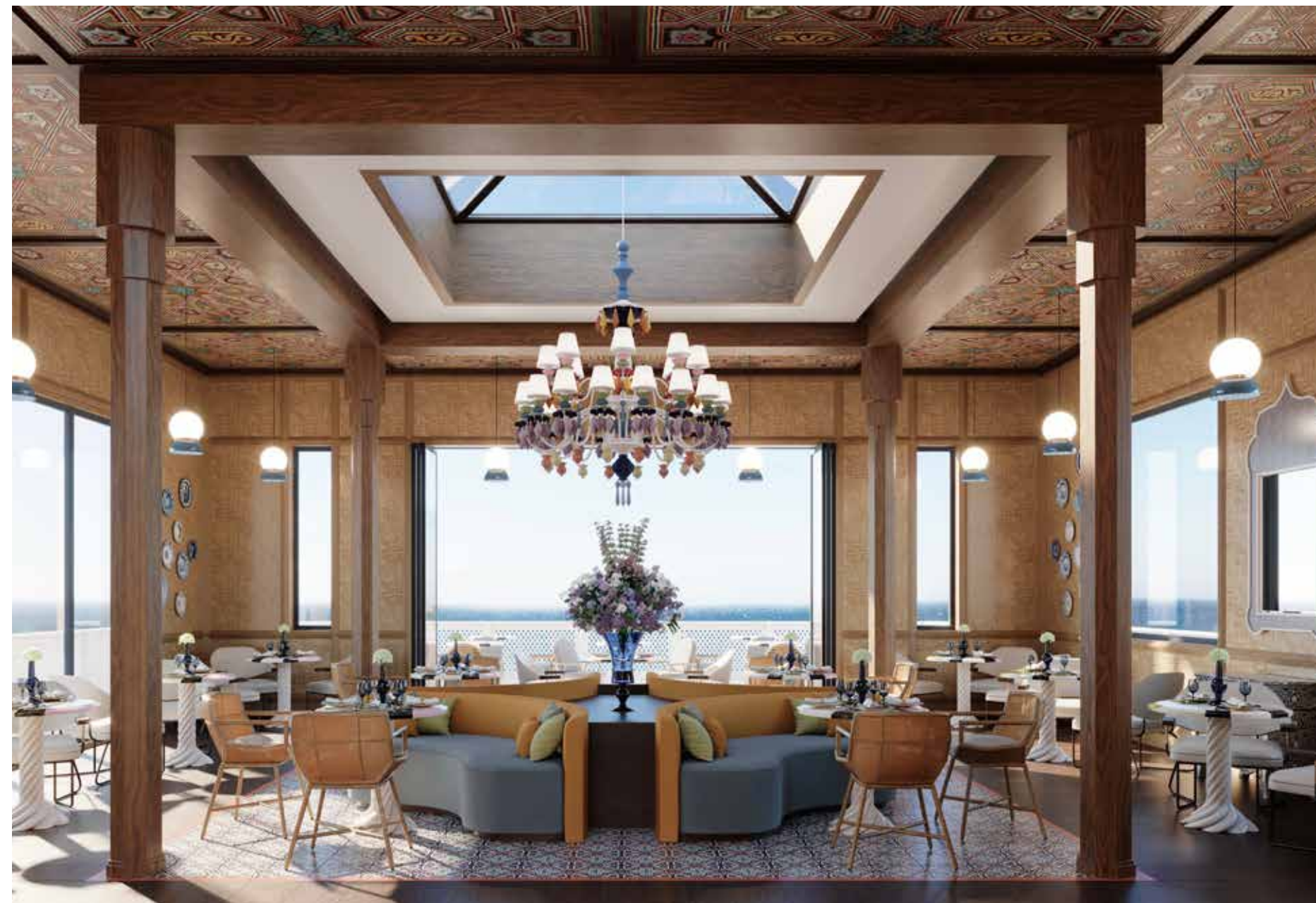
H HOTEL - DUBAI - UAE



THALASSA FINE DINING - AMATHUS HOTEL - CYPRUS



ROYAL MANSOUR - TANGIER - MOROCCO





ORIENTAL BRASSERIE - MYSK HOTEL - KUWAIT



THE COFFEE SHOP - MYSK THE PLAM - DUBAI



KFIFENE RESIDENCE - LEBANON



NAPIER ROAD - LONDON (SOUKI)



“ I am curious about everything
and everything nourishes my
creativity. My works must be
connected to their environment
and bring about a feeling of
wellbeing. ”

Galal Mahmoud

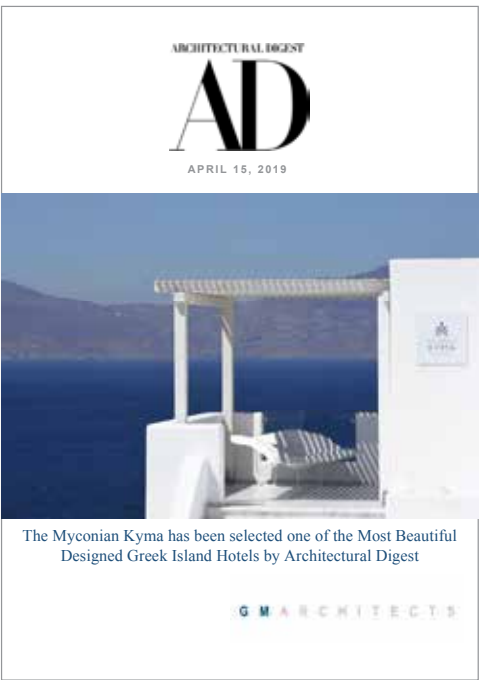


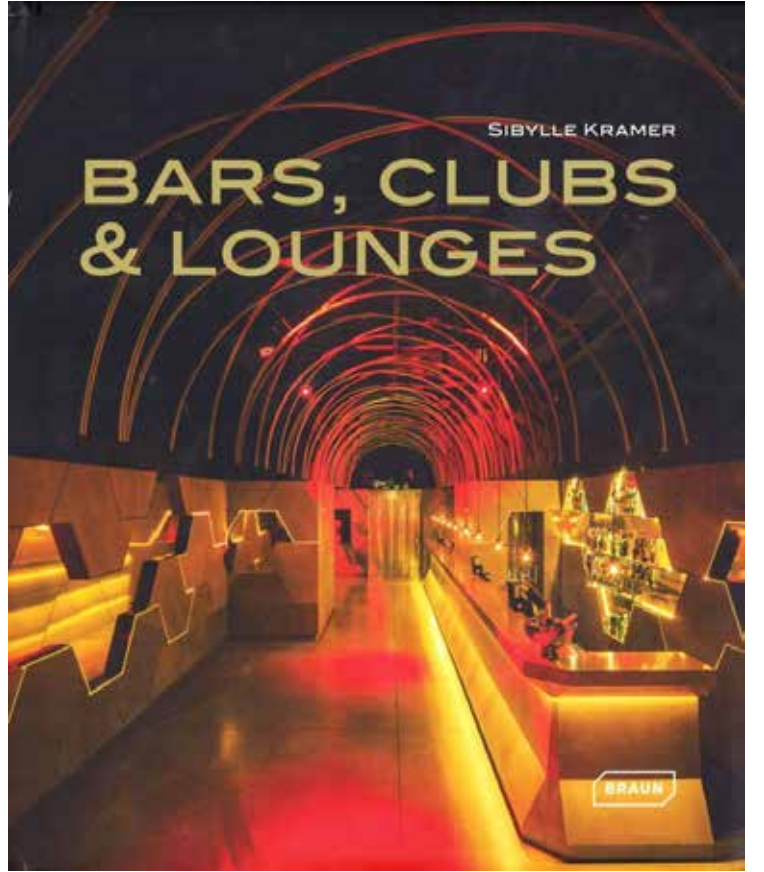
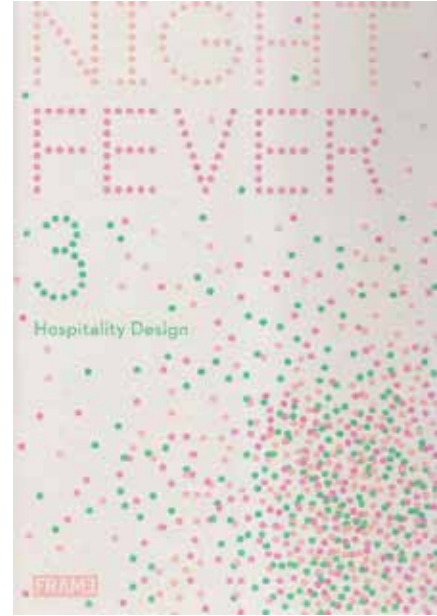
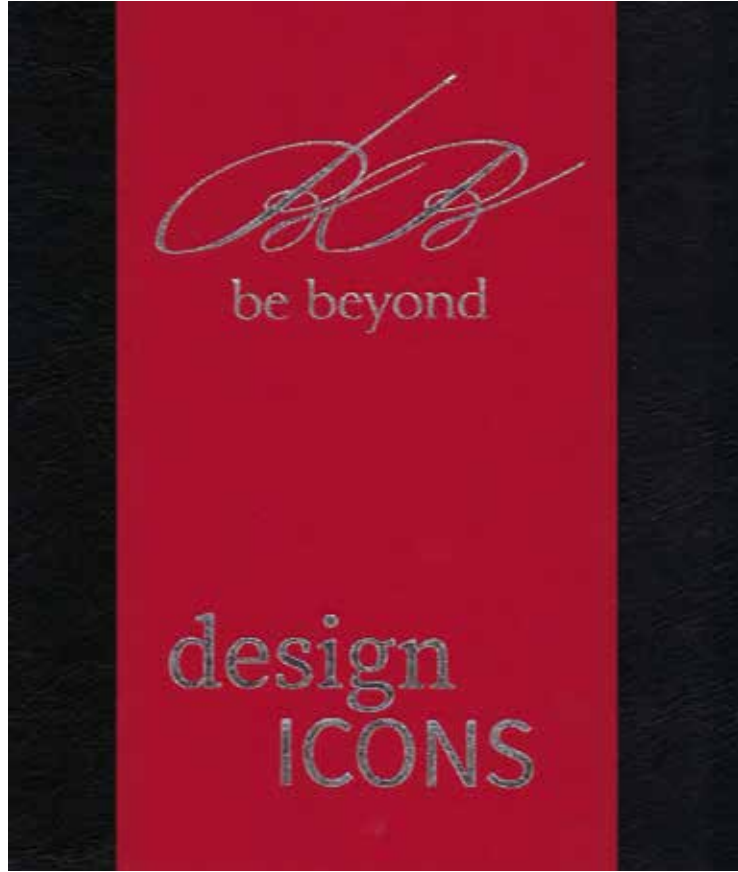
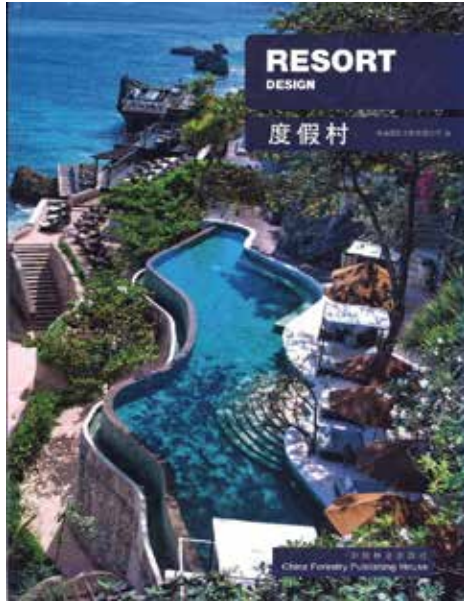
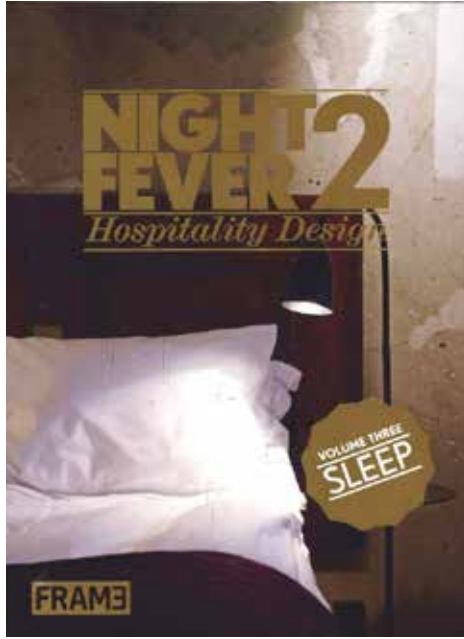
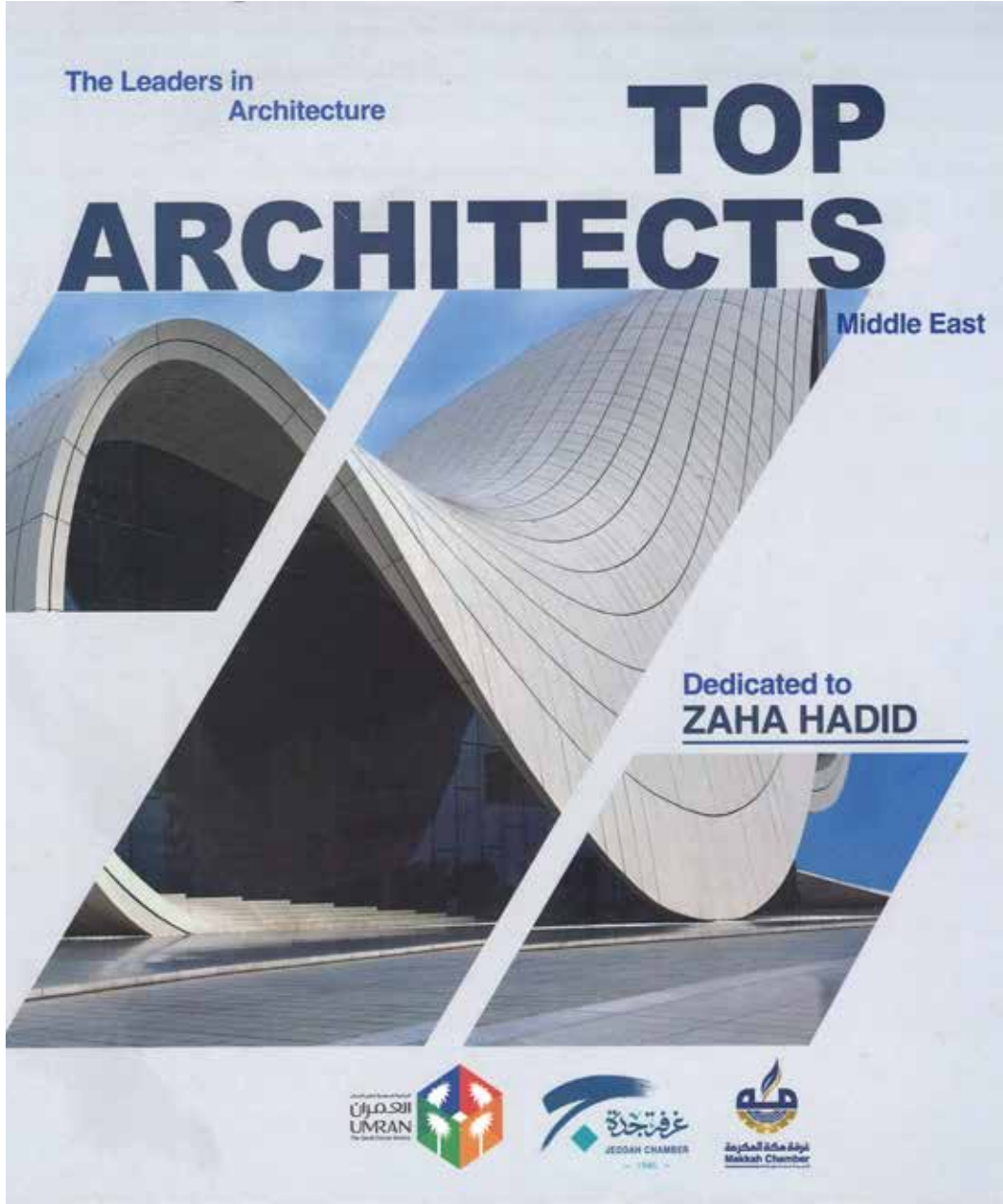
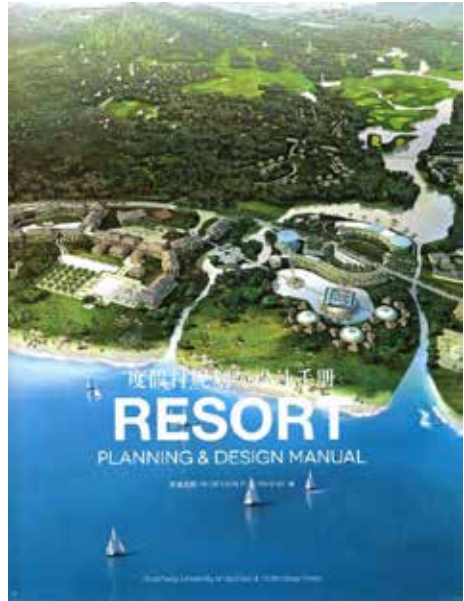
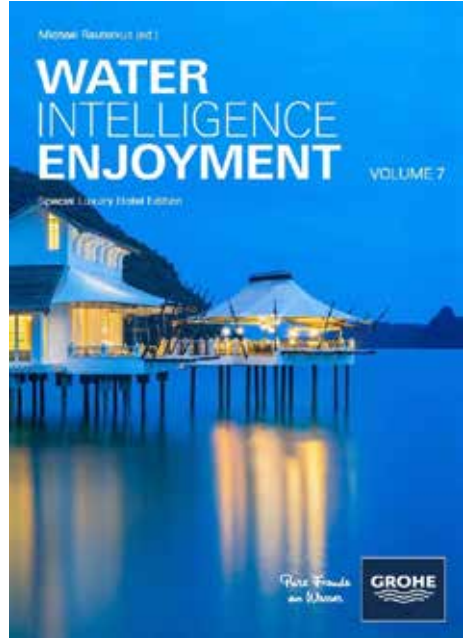
DIPLOMATIC BEACH CLUB - BYBLOS - LEBANON

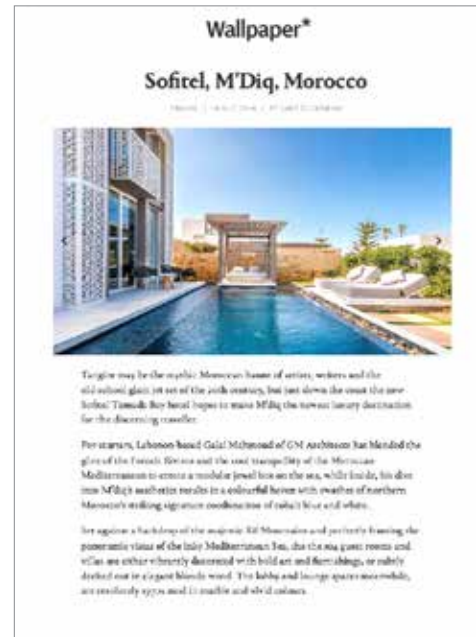


PUBLICATIONS & AWARDS











“ Context, local culture, history and everything concerning the physical location of our intervention are my main source of inspiration. It all boils down to creating a space that speaks the language of its environment, with a modern and contemporary interpretation, allowing visitors to really embrace the context, but providing the requirements of our demanding modern lifestyle and always evolving in terms of comfort and wellbeing. ”

Galal Mahmoud

OUR PROJECTS

JUMEIRAH HOTEL & RESORT - AL SAHEL - BAHRAIN

BEL HORIZON RESIDENCE - LEBANON

SOFITEL NOVOTEL - MARSEILLE OLD PORT- FRANCE

MAJLIS GRAND MERCURE - DUBAI - UAE

H HOTEL - DUBAI - UAE

MYSK HOTEL – KUWAIT

RESIDENCE CABO NEGRO - MOROCCO

SKY GATE RESIDENCE - BEIRUT - LEBANON

MYSK THE PLAM – DUBAI - UAE

SHERATON GRAND RESORT - LES ALMADIES- DAKAR - SENEGAL

LE MERIDIEN - RIYADH – SAUDI ARABIA

RODA BEACH RESORT - JUMEIRAH – DUBAI - UAE

SOFITEL TAMUDA BAY HOTEL & RESORT - MOROCCO

SOFITEL WINTER PALACE HOTEL - LUXOR - EGYPT

MYCONIAN AMBASSADOR RELAIS & CHATEAUX HOTEL - MYKONOS - GREECE

MYCONIAN NAIA LUXURY SUITES - MYKONOS - GREECE

MYCONIAN KYMA DESIGN HOTEL - MYKONOS - GREECE

DIPLOMATIC BEACH CLUB - BYBLOS - LEBANON

THE KEY HOTEL - BEIRUT - LEBANON

RESIDENCE AGHIOS YANNIS - MYKONOS - GREECE

SOFITEL LE GABRIEL - BEIRUT - LEBANON

MYKONOS VILLA - GREECE

ROTANA SALALAH HOTEL & RESORT - SULTANATE OF OMAN

SHERATON HOTEL - NOUAKCHOTT - MAURITANIA

MUSEUM OF CIVILIZATIONS - BEIRUT - LEBANON

TORTUGA RESIDENCES & VILLAS - BATROUN - LEBANON

LE BRISTOL HOTEL - BEIRUT - LEBANON

LE GRAY, SMALL LEADING HOTELS - BEIRUT - LEBANON

DENTAL CLINIC – PARIS - FRANCE

ROTANA KHALIFAH PARK HOTEL - ABU DHABI - UAE

SHERATON ATAKOY MARINA - ISTANBUL - TURKEY

O' BEACH RESORT – DEAD SEA - JORDAN

BURJ AL HAMAM RESTAURANT - KUWAIT CITY - KUWAIT

LE MERIDIEN - WATERFRONT MARINA MAF - DBAYEH - LEBANON

PORT D'AMOUR - DAMOUR - LEBANON

KNOTICA ISLAND - DUBAI - UAE

MOULAY YACOUB MASTER PLAN - FES - MOROCCO

BURJ AL HAMAM RESTAURANT - DOHA - QATAR

AMBER VALLEY SPA – DEAD SEA - JORDAN

AMBER URBAN RETREAT BOUTIQUE HOTEL - AMMAN - JORDAN

RADISSON AL AQA - BEACH RESORT & RESIDENCES - FUJAIRAH - UAE

DA GIOVANNI RESTAURANT - BCD - LEBANON

PAVILLON NOURA RESTAURANT - PARIS - FRANCE

GRAND ROTANA HOTEL - SHARM EL-SHEIKH - EGYPT

SENSES RESTAURANT - JEDDAH – SAUDI ARABIA

JAVA LOUNGE, RESTAURANT – JEDDAH - SAUDI ARABIA

EDDE SANDS BEACH RESORT - BYBLOS - LEBANON

FERRARI, MASERATI SHOWROOM - BEIRUT - LEBANON

NOODLES RESTAURANT - BEIRUT - LEBANON

PRAVDA BAR - BEIRUT - LEBANON

LA POSTA RESTAURANT- SOLIDERE - BCD - LEBANON

STEPHANE ROLLAND, FRANÇOIS 1ER ROAD- PARIS - FRANCE

KRIZIA – MONTAIGNE AVENUE, PARIS - FRANCE

CHATEAU DE LA GRANGE GOLF, CONFERENCES - RESTAURANT & HOTEL - FRANCE

LANCEL - AIX-EN-PROVENCE - FRANCE

PUIFORCAT – MATIGNON AVENUE, PARIS - FRANCE



OUR CONTACT INFORMATION

BEIRUT OFFICE - LEBANON

Verdun Concorde Bldg, 10th Floor
Beirut, Lebanon
Tel: +961 1 346 770
Fax: +961 1 747 470
Gm-arch@gm-architects.com

ABU DHABI OFFICE - UAE

Zayed The First Road (Electra)
& Al Najda Road Intersection
P1341 building. C Tower Office 702
B.P: 52055, Abu Dhabi, UAE
Tel: +971 2 643 44 55
Fax: +971 2 643 44 54
Gmad-arch@gm-architects.com

G M A R C H I T E C T S